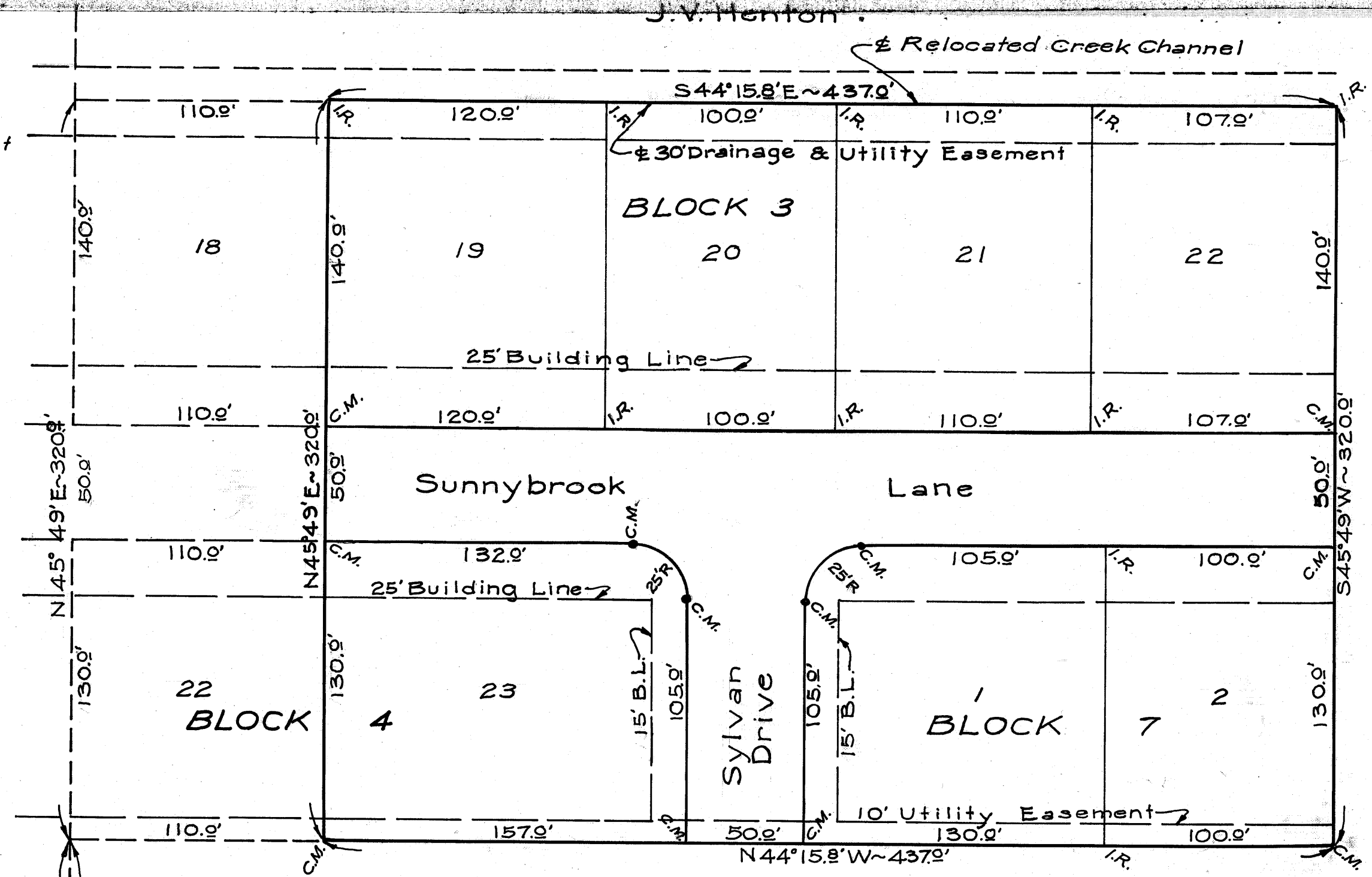


J.V. Henton

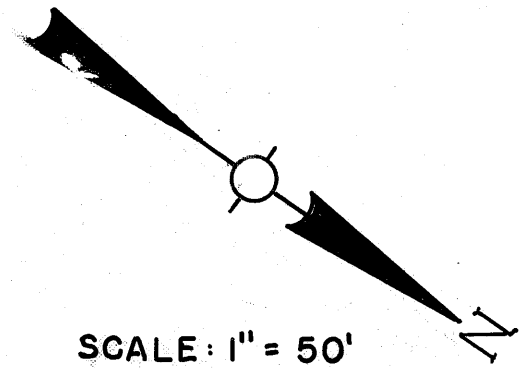
C.M. = Concrete Monument
I.R. = Iron Rod

ENCHANTED MEADOWS
1ST INSTALLMENT
Vol. 244, Page 129

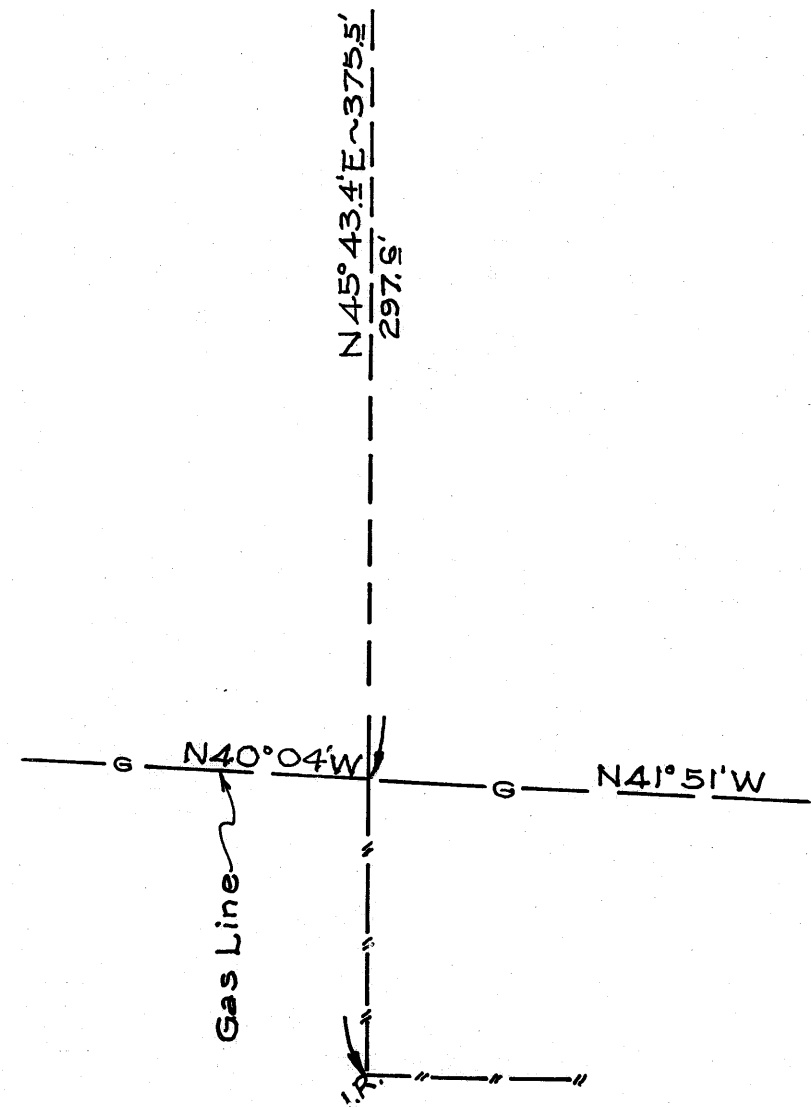


J. O. Britton

Harmony Constr. Co.



ENCHANTED MEADOWS
 2ND INSTALLMENT
 RICHARD CARTER LEAGUE
 BRYAN, BRAZOS COUNTY, TEXAS
 SPENCER J. BUCHANAN & ASSOC., INC.
 CONSULTING ENGRS. BRYAN, TEXAS
 1965
 D.R.: VOL. 249, PG. 396



on base and 1/14/63